



MONTHLY MEMBERSHIP PROGRESS REPORT

Results as of: 1/31/2016

Multiple District 3

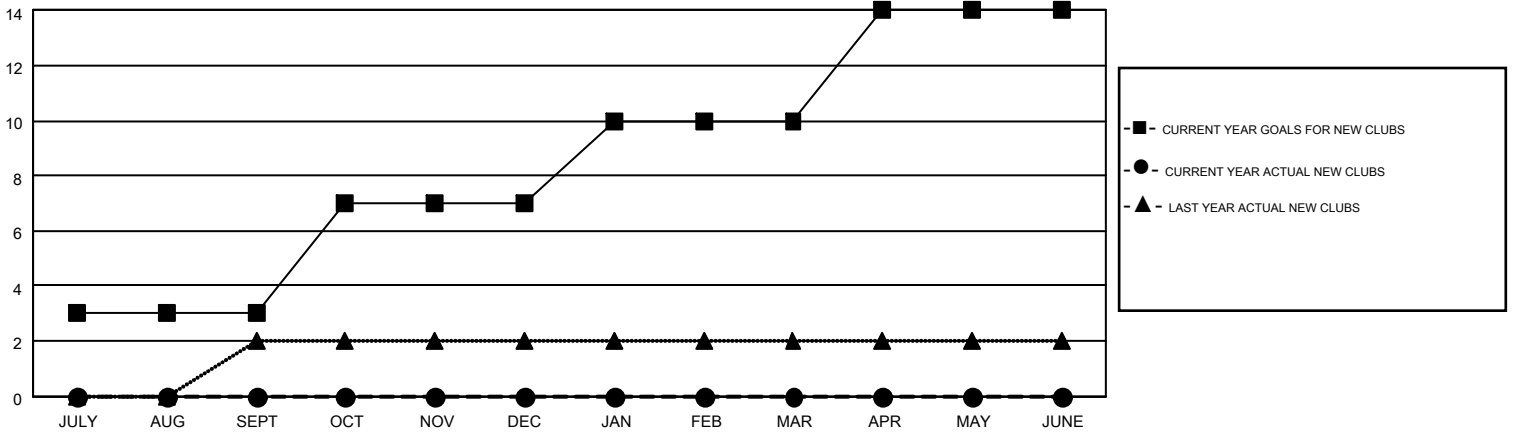
LOCATION: OKLAHOMA

GMT: HAL GRIFFIN

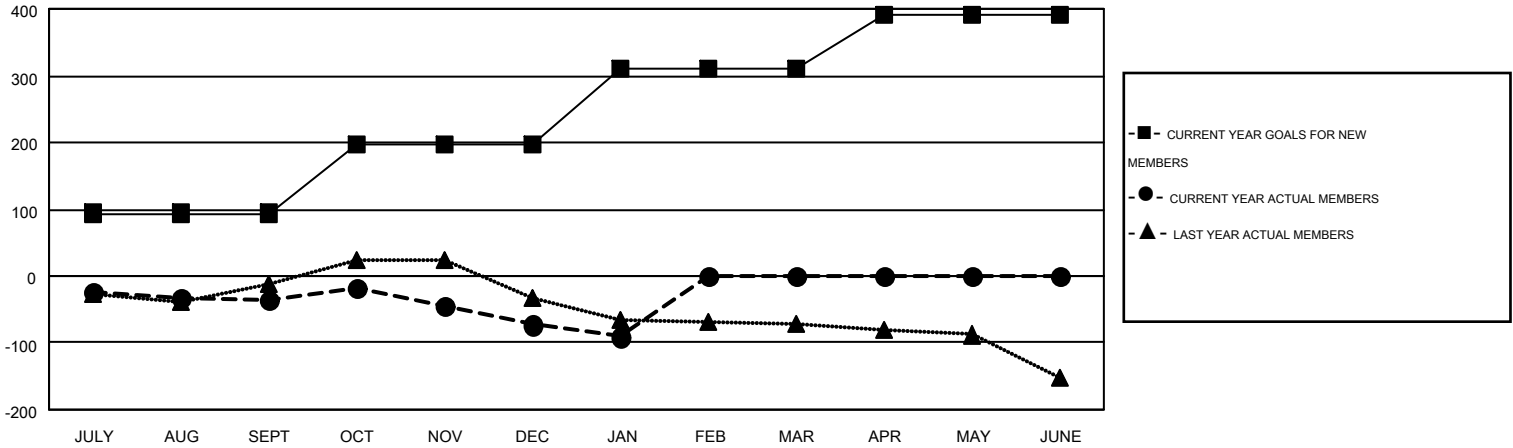
GMT CA 1

Clubs					Members				
RESULTS FOR 2015-2016					RESULTS FOR 2015-2016				
QUARTER	NEW CLUB GOAL	NEW CLUBS	DROPPED CLUBS	NET GAIN/LOSS	QUARTER	NEW MEMBER GOAL	CHARTER AND NEW MEMBERS ADDED	DROPPED MEMBERS	NET GAIN/LOSS
JULY/AUG/SEPT	3	0	0	0	JULY/AUG/SEPT	94	92	128	-36
OCT/NOV/DEC	4	0	2	-2	OCT/NOV/DEC	103	98	135	-37
JAN/FEB/MAR	3	0	0	0	JAN/FEB/MAR	114	28	46	-18
APR/MAY/JUNE	4	0	0	0	APR/MAY/JUNE	81	0	0	0

GOALS AND ACTUAL NEW CLUBS CUMULATIVE



GOALS AND ACTUAL MEMBERS CUMULATIVE



DROPPED CLUBS: 2	83 CLUBS OF 170 ADDED 1 OR MORE NEW MEMBERS	<u>GENDER DISTRIBUTION</u>	
<u>DROPPED MEMBERS</u>		MALE	3,036 (70.93%)
DECEASED	31	FEMALE	1,244 (29.07%)
CLUB CANCELLED	25	<u>FAMILY UNIT MEMBERS</u> 631	
OTHER	253	<u>HEAD OF HOUSEHOLD</u> 309	
TOTAL	309	<u>NON-HEAD OF HOUSEHOLD</u> 322	

[CLICK HERE FOR HEALTH ASSESSMENT DATA](#)